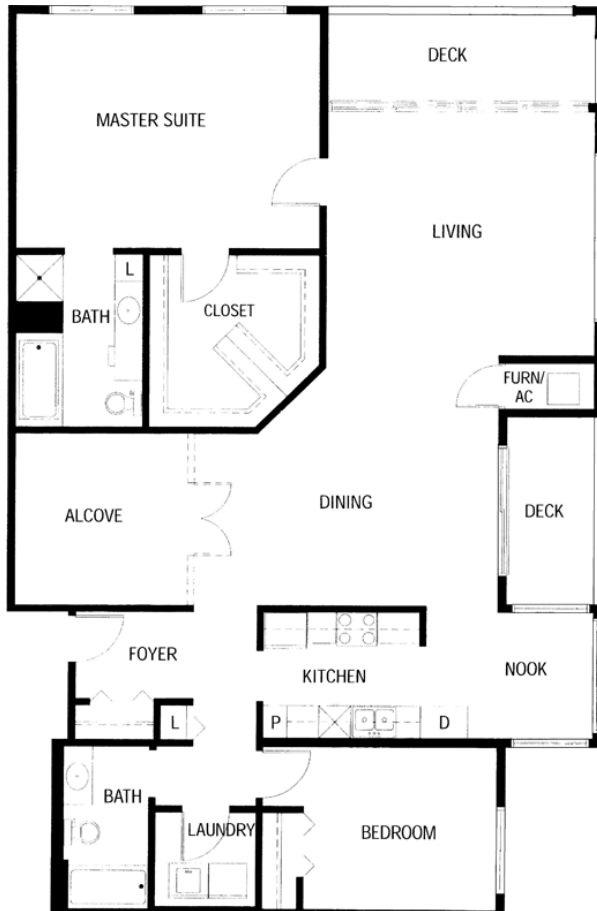


# CHARLES TIFFANY

2 bedrooms, 2 baths -- 1,763 sq. ft.

- Bright, spacious end unit
- Large windows on two sides
- Magnificent skyline views
- Two decks
- Huge Master Suite with large walk-in closet



## Every Gramercy Greenhaven Home includes:

- Stately 9 ft. ceilings with cove moldings
- Professionally installed floor coverings
- Efficient galley kitchen with range, refrigerator, range, microwave oven dishwasher and disposal
- In-unit laundry with washer and dryer
- Six-panel interior doors
- Custom blinds on all windows
- Locked storage unit on the same floor
- Secure underground heated garage with car wash bay
- Stairway and elevator access to all floors

## PLUS use of all the amenities:

- Library/Business Center
- Creative Arts Room
- Fitness Room
- Wood working shop
- Large outdoor courtyard with patio and gas grills
- Clubhouse with indoor pool, sauna, spa, virtual golf, and outdoor patio area
- Gramercy Party Room with full kitchen (Available for private parties with refundable room reservation fee)
- Guest Suite (By reservation. Affordable nightly rates)

## Home Owner's (HOA) Fee includes:

- Professional management
- Interior and exterior maintenance
- On-site maintenance tech
- Common area utilities and insurance
- Sewer and softened hot water
- Recycling and trash removal
- Basic Cable TV